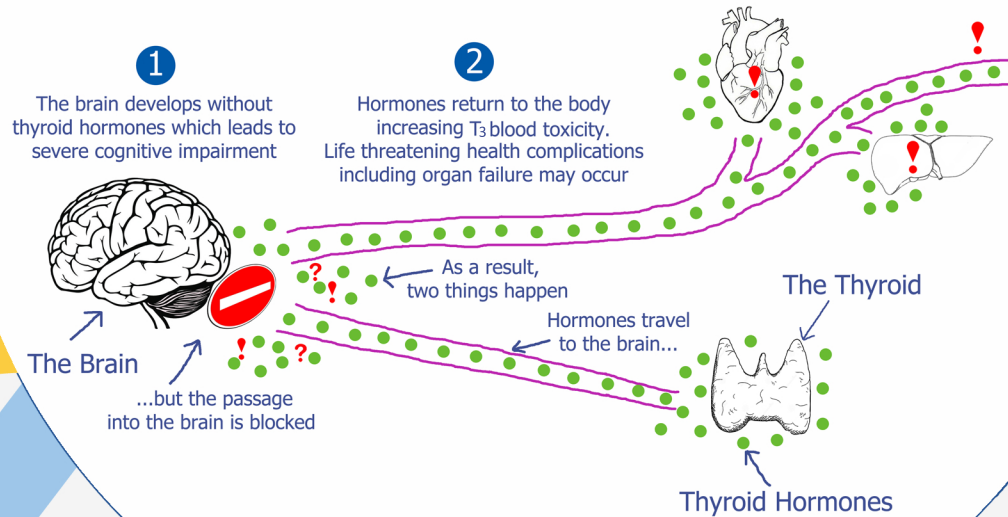


# What is MCT8 Deficiency? (Allan-Herndon-Dudley Syndrome)



## The MCT8-AHDS Foundation

Is a patient led organization striving to find a cure for MCT8 Deficiency, improve the quality of life and potential of affected children, support and empower hundreds of families around the world, learn from their collective experiences and raise awareness of this ultra-rare condition with doctors, researchers and the general public.

### Symptoms

- Lack of head control
- Central hypotonia
- Peripheral hypertonia
- Intellectual disability
- Inability to gain and maintain weight
- Increased heart rate
- Motor delay
- Low bone density

### Diagnosis

MCT8 Deficiency may be diagnosed by a pediatric neurologist, a pediatric endocrinologist or a geneticist.

### Detection

The earliest abnormalities include floppy body and the inability to support the head. Typical thyroid tests may indicate the syndrome (high serum  $T_3$  and borderline low  $T_4$ ). Confirmation requires genetic testing.