

A Novel Globotriaosylceramide Quantification Assay for the Rapid Diagnosis of Fabry Disease

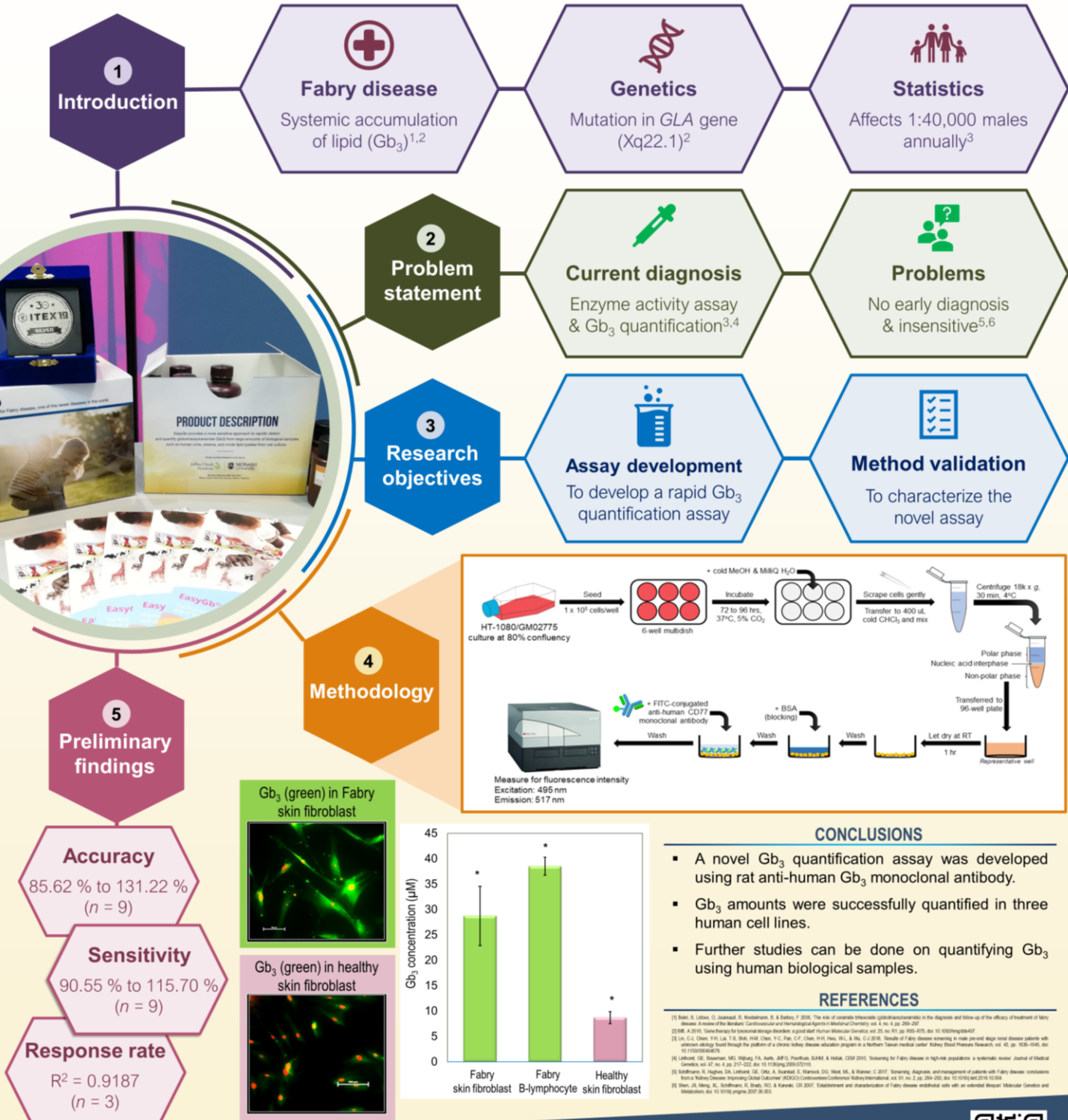
Allan Wee Ren NG, Kumaran NARAYANAN*

School of Science, Monash University Malaysia, Jalan Lagoon Selatan, 47500 Subang Jaya, Selangor, Malaysia.

*Corresponding author e-mail: kumaran.narayanan@monash.edu

RESEARCH HIGHLIGHTS

- Current diagnostic approach for Fabry disease is insensitive, low-throughput, and costly.
- Using rat anti-human Gb₃ monoclonal antibody, a novel Gb₃ quantification assay has been developed in this study.
- Accuracy, precision, and sensitivity of the novel assay was verified using crude cellular lipid extracts.
- The novel assay serves as a cost-effective and rapid approach for the diagnosis of Fabry disease.



CONCLUSIONS

- A novel Gb₃ quantification assay was developed using rat anti-human Gb₃ monoclonal antibody.
- Gb₃ amounts were successfully quantified in three human cell lines.
- Further studies can be done on quantifying Gb₃ using human biological samples.

REFERENCES

- [1] Beck, R., Lohme, C., Janssens, R., Kosterlmann, H., & Barbe, F. 2006. The role of ceramide trihexoside (glabromelanin) in the diagnosis and follow-up of the efficacy of treatment of Fabry disease. *Annals of the New York Academy of Sciences*, vol. 4, no. 4, pp. 205-207.
- [2] Barbe, A. 2010. Slow progress for lysosomal storage disorders: a good start. *Human Molecular Genetics*, vol. 25, no. R1, pp. R65-R75. doi: 10.1093/hmg/ddp407
- [3] Liu, C.-C., Chen, Y.-H., Liu, T.-S., Shih, H.-M., Chen, Y.-C., Peng, C.-F., Chen, H.-H., Hsu, S.-H., & Wu, C.-J. 2010. Results of Fabry disease screening in high-potential organ donor patients with unknown antibody titer through the platform of a chronic kidney disease education program in a Northern Taiwan medical center. *Kidney Blood Pressure Research*, vol. 43, pp. 1035-1040. doi: 10.1159/00029475
- [4] Leffondre, G.E., Bissler, M.J., Sigburg, F.A., Aebi, B.F.G., Puchner, S.H.M., & Haskal, C.M. 2011. Screening for Fabry disease in high-risk populations: a systematic review. *Journal of Medical Genetics*, vol. 47, no. 4, pp. 217-222. doi: 10.1136/jmg.2010.021116
- [5] Hoffmann, H., Hagen, D.A., Lehmann, G.E., Ott, A., Sauerb, C., Wenzel, D.J., West, M., & Wenzel, C. 2007. Screening, diagnosis, and management of patients with Fabry disease: conclusions from a Fabry Disease Working Group Conference. *JGIM* Conference Proceedings International, vol. 91, no. 2, pp. 204-205. doi: 10.1093/gim/2010.10.004
- [6] Hsu, J.-H., Hsu, S.-H., Saitohara, H., Saitoh, S.I., & Kawase, C.S. 2007. Establishment and characterization of Fabry disease endothelial cells with an selected Rat anti-Human Molecular Genetics and Metabolism, doi: 10.1016/j.pnpnp.2007.08.003.

Scan here to contact
the presenter:

